

## WINCHES



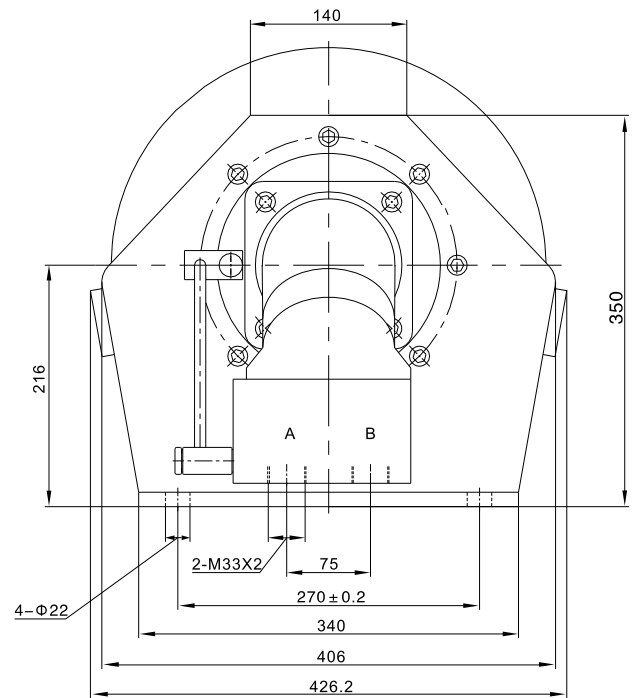
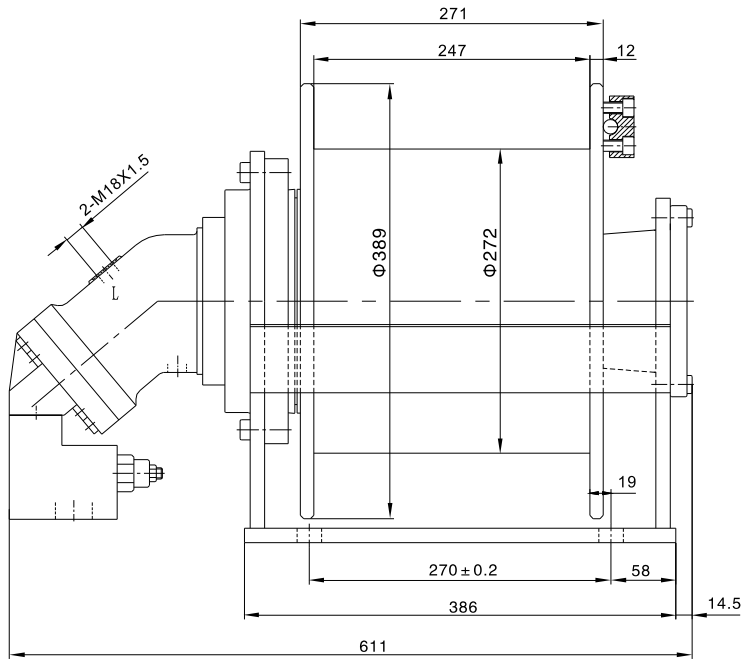
### TECHNICAL DATA

	Layer	Pull force N	Rope speed m min <sup>-1</sup>	Rope capacity m	Total displacement cm <sup>3</sup> /rev	Lift pressure MPa	Flow L min <sup>-1</sup>	Rope diameter mm	Hydraulic motor	Ratio
<b>HNH 15</b>	1 <sup>st</sup>	15.000	75	13,4	925,2	16,4	77,5	13	A2FM45	1 : 20,3
	2 <sup>nd</sup>	13.700	81,8	31						
	3 <sup>rd</sup>	12.700	88,7	50						
<b>HNH 20</b>	1 <sup>st</sup>	20.000	61	13,4	1.138,3	17,8	77,5	13	A2FM45	1 : 20,3
	2 <sup>nd</sup>	18.300	66,5	31						
	3 <sup>rd</sup>	16.900	72,1	50						
<b>HNH 30</b>	1 <sup>st</sup>	30.000	55	19,6	2.098,0	17,7	106	16	A2FM45	1 : 37,4
	2 <sup>nd</sup>	27.500	60	44,6						
	3 <sup>rd</sup>	25.300	65,2	71,7						
<b>HNH 40</b>	1 <sup>st</sup>	40.000	50	19,6	3.007,0	16,4	138	16	A2FM45	1 : 37,4
	2 <sup>nd</sup>	36.600	54,6	44,6						
	3 <sup>rd</sup>	33.800	59,2	71,7						
<b>HNH 50</b>	1 <sup>st</sup>	50.000	30	80,3	4.870,0	14,7	118	20	A2FE45	1 : 106,8
	2 <sup>nd</sup>	45.400	33	53,4						
	3 <sup>rd</sup>	41.600	36	25,4						
<b>HNH 60</b>	1 <sup>st</sup>	60.000	30	80,3	4.870,0	17,7	118	20	A2FE45	1 : 106,8
	2 <sup>nd</sup>	54.500	33	53,4						
	3 <sup>rd</sup>	50.000	36	25,4						
<b>HNH 70</b>	1 <sup>st</sup>	70.000	30	81,4	5.991,5	16,8	143,8	22	A2FE45	1 : 106,8
	2 <sup>nd</sup>	63.000	33,2	53,9						
	3 <sup>rd</sup>	57.300	36,5	25,6						

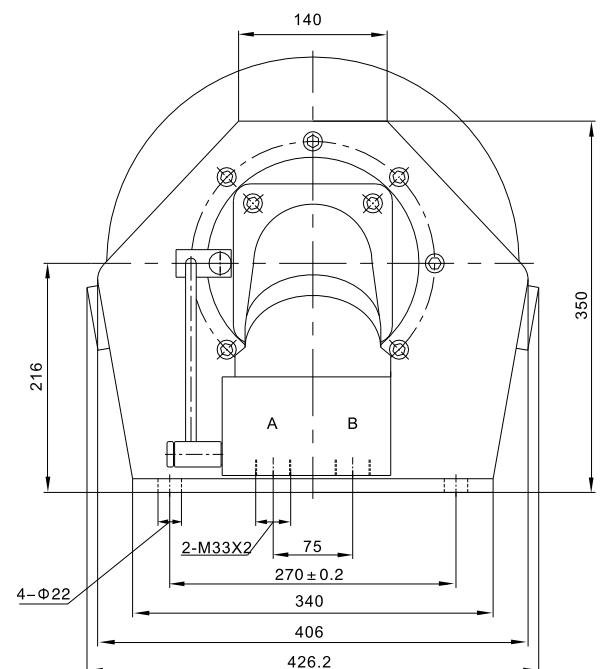
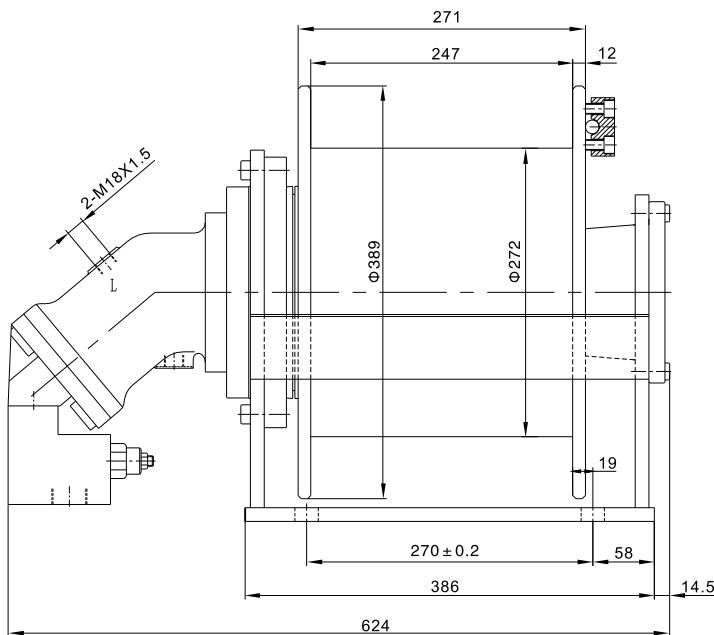
## WINCHES

### DRAWINGS

HNH 15



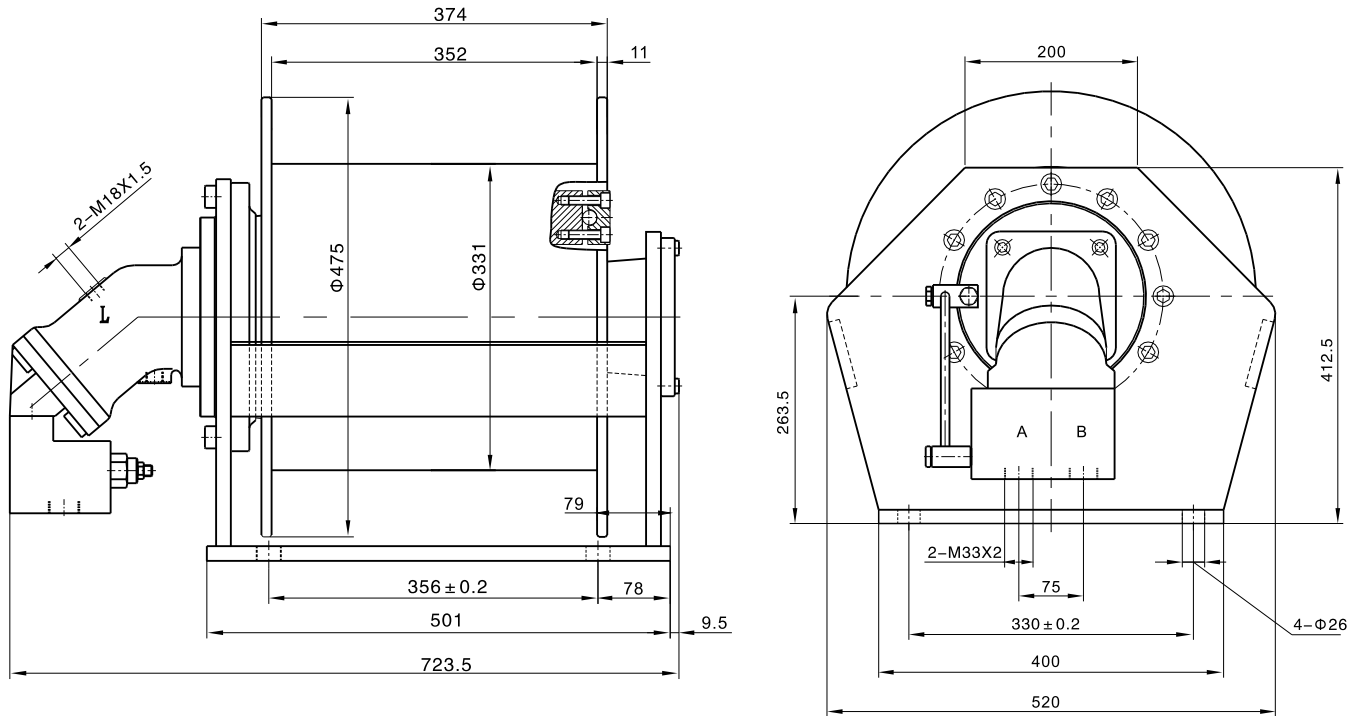
HNH 20



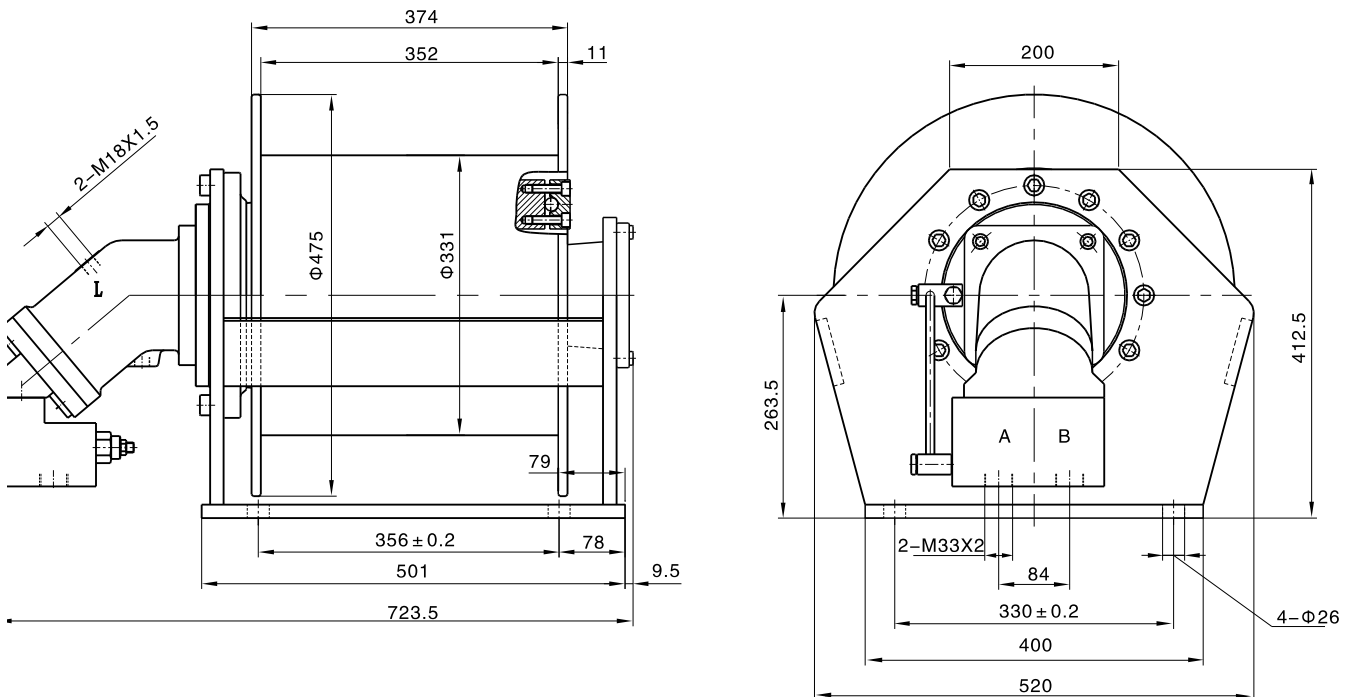
## WINCHES

### DRAWINGS

HNH 30



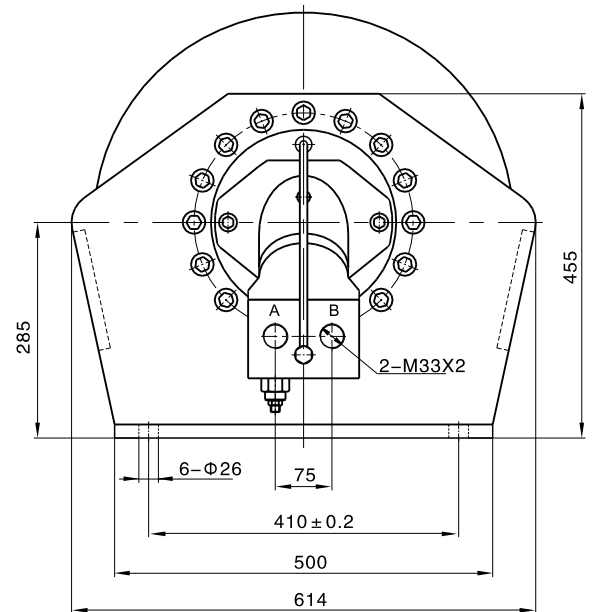
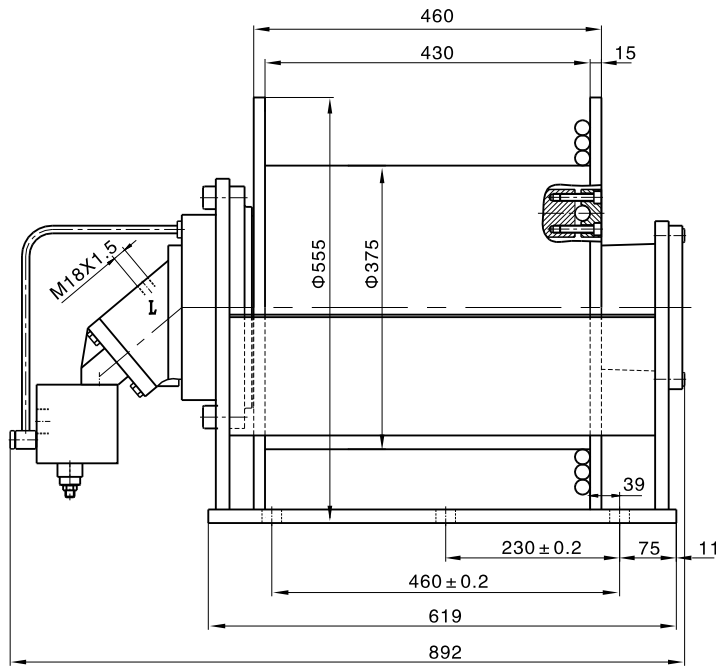
HNH 40



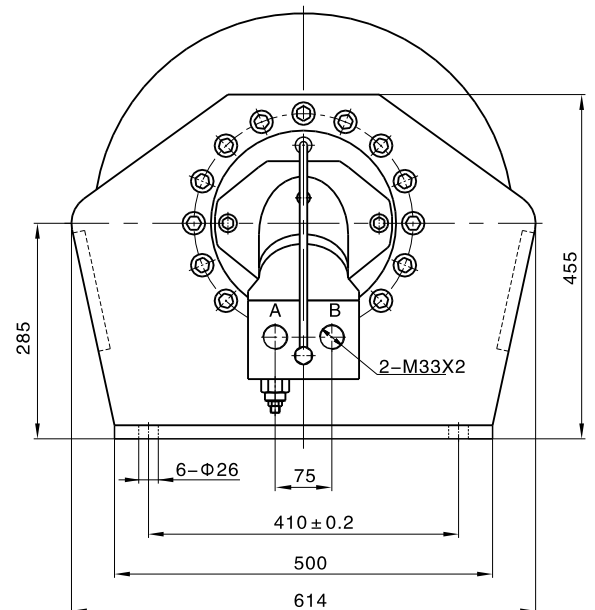
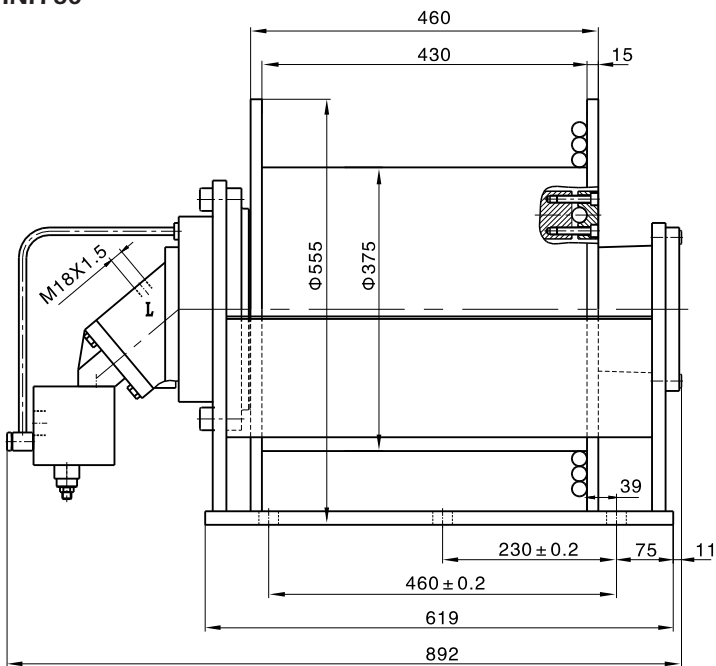
## WINCHES

### DRAWINGS

HNH 50



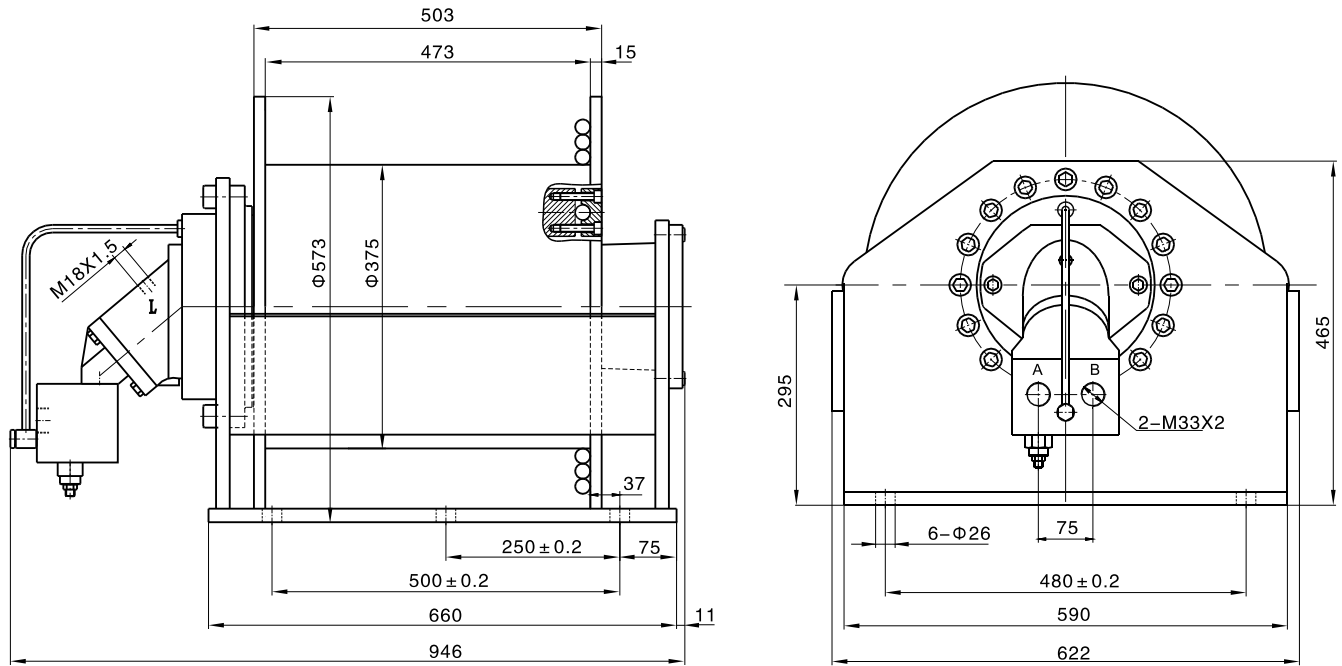
HNH 60



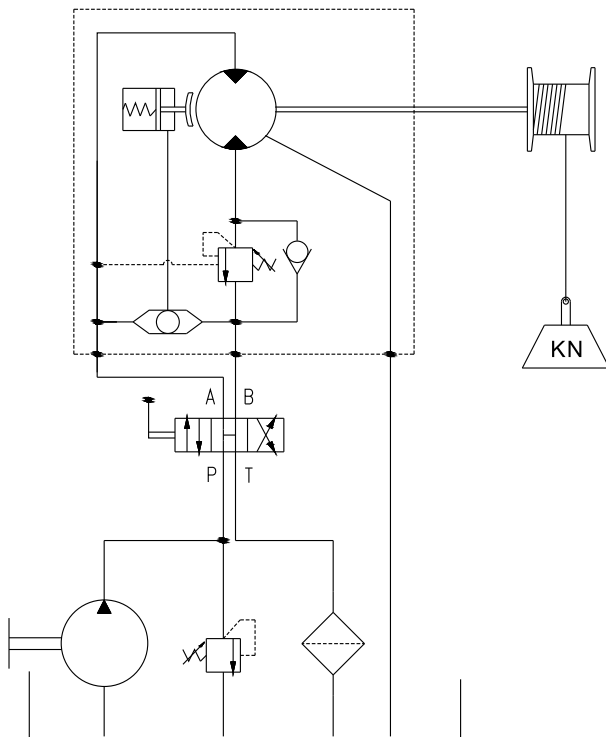
## WINCHES

### DRAWINGS

HNH 70



### HYDRAULIC CIRCUIT



## WINCHES



### TECHNICAL DATA

#### HNS SERIES

Standard winches

	Line pull		Max. line speed m min <sup>-1</sup>	Cable diameter mm	Cable length (4 <sup>th</sup> layer) m	Radial piston motor			Planetary gearbox			Brake release pressure bar	Weight kg
	1 <sup>st</sup> layer kg	4 <sup>th</sup> layer kg				Displacement cm <sup>3</sup> rev <sup>-1</sup>	Working pressure bar	Max. flow L min <sup>-1</sup>	Ratio	Torque			
										continuous N	peak N		
<b>HNS 1500</b>	1.500	1.150	55	13	50	160	160	60	1:7	2.000	4.500	30	110
<b>HNS 2000</b>	2.000	1.600	55	13	50	170	175	60	1:7	2.500	4.500	30	110
<b>HNS 2500</b>	2.500	2.000	55	13	50	250	175	60	1:7	3.000	4.500	30	110
<b>HNS 3000</b>	3.000	2.400	50	13	50	350	175	120	1:7	3.500	6.500	30	130
<b>HNS 3500</b>	3.500	2.800	50	13	50	500	175	120	1:7	4.500	6.500	30	130

#### HNU SERIES

Utility winches

	Line pull		Max. line speed (3 <sup>rd</sup> layer) m min <sup>-1</sup>	Cable diameter mm	Cable length m	Radial piston motor			Planetary gearbox		Brake release pressure bar	Weight kg
	1 <sup>st</sup> layer kg	3 <sup>rd</sup> layer kg				Displacement cm <sup>3</sup> rev <sup>-1</sup>	Working pressure bar	Max. flow L min <sup>-1</sup>	Ratio	Continuous torque N		
<b>HNU 1000</b>	1.000	800	80	10	35	130	170	60	1:4	1.000	30	90
<b>HNU 1500</b>	1.500	1.200	65	10	35	190	170	60	1:4	1.000	30	90

## WINCHES

### TECHNICAL DATA

#### HNC SERIES

Custom-built winches

	Max. line pull (1 <sup>st</sup> layer) kg	Max. line speed (1 <sup>st</sup> layer) m min <sup>-1</sup>	Max. cable diameter mm	Cable length m	Max. power kW	Max. continuous pressure bar	Max. flow L min <sup>-1</sup>	Max. continuous torque Nm	Min. brake release pressure bar
<b>HNC-S (Single speed)</b>	8.000	100	13 ÷ 26	50 ÷ 3.000	70	230	300	10.000	30
<b>HNC-D (Dual speed)</b>	5.000	100 / 200	13 ÷ 26	50 ÷ 1.500	70	200	200	8.500	30

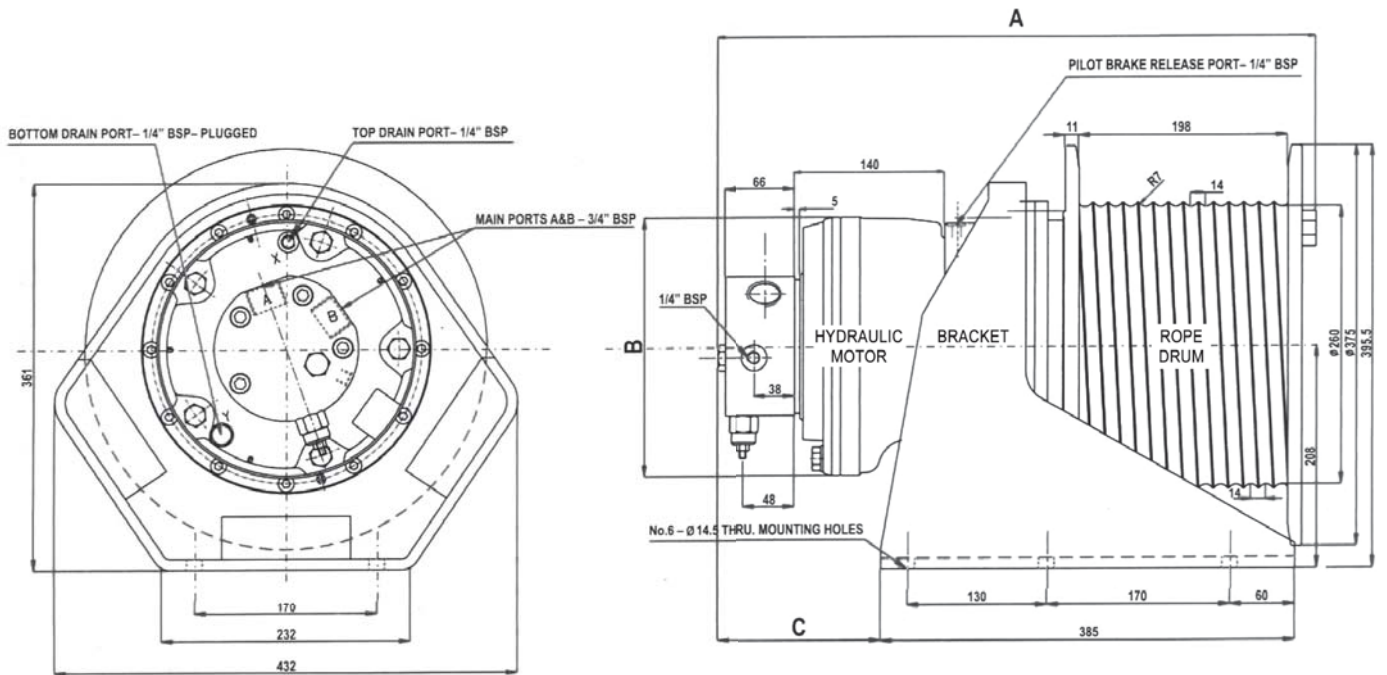
- **Gearbox:** planetary, single stage\*
- **Brake:** hydraulic release wet disc
- **Ocv:** single/double cartridge type on manifold block

\*Please note: the above technical data are based on single stage reduction gearbox. However, if needed, HYDROMOBIL is also able to build custom winches with multistage planetary gearboxes and line pull up to 14.000 kg (1<sup>st</sup> layer), both single or dual speed.

## WINCHES

### DRAWINGS

#### HNS SERIES



#### HNU SERIES

